

ILLUMINATOR – AUX. CRANE LOAD CHART

EBI CRANES	1022-4445800
900 ST. BERNARD PKWY.	
BRAITHWAITE, LA 70040	API DYNAMIC LOAD CHART
USA	MODEL: EBI CRANE TC100-54-100
504-682-5245	5-PART LINE
SERIAL # TC100-54-100-445	

REACH (FT.)	BOOM ANGLE (DEG.)	DYNAMIC LOAD LINE FULLY RETRACT (LBS.)	STATIC LOAD LINE FULLY RETRACT (LBS.)	BOOM ANGLE (DEG.)	DYNAMIC LOAD LINE FULLY RETRACT (LBS.)	STATIC LOAD LINE FULLY RETRACT (LBS.)	FAST LINE FULLY EXTENDED (LBS.)
10	79°	98,600	98,600	----	----	----	----
15	74°	73,600	98,600	82°	58,600	88,600	4,900
20	68°	55,600	84,100	79°	49,600	75,100	4,900
25	62°	45,600	69,100	76°	38,600	58,600	4,900
30	56°	38,700	58,800	73°	31,600	48,100	4,900
35	49°	33,600	51,100	70°	26,600	40,600	4,900
40	42°	29,600	45,100	66°	21,600	33,100	4,900
45	33°	26,600	40,600	63°	18,600	28,100	4,900
50	22°	23,600	36,100	60°	16,600	25,600	4,900
55	0°	17,600	27,100	57°	14,600	22,600	4,900
60	----	----	----	53°	13,600	21,100	4,900
65	----	----	----	49°	11,600	18,100	4,900
70	----	----	----	45°	10,600	16,600	4,900
75	----	----	----	41°	9,600	15,100	4,900
80	----	----	----	37°	8,600	13,600	4,900
85	----	----	----	32°	7,600	12,100	4,900
90	----	----	----	26°	6,600	10,600	4,900
95	----	----	----	18°	5,600	9,100	4,900
100	----	----	----	0°	3,100	5,600	4,900

REACH = CENTER OF BASE ROTATION TO CENTER OF LOAD LINE SHEAVE.

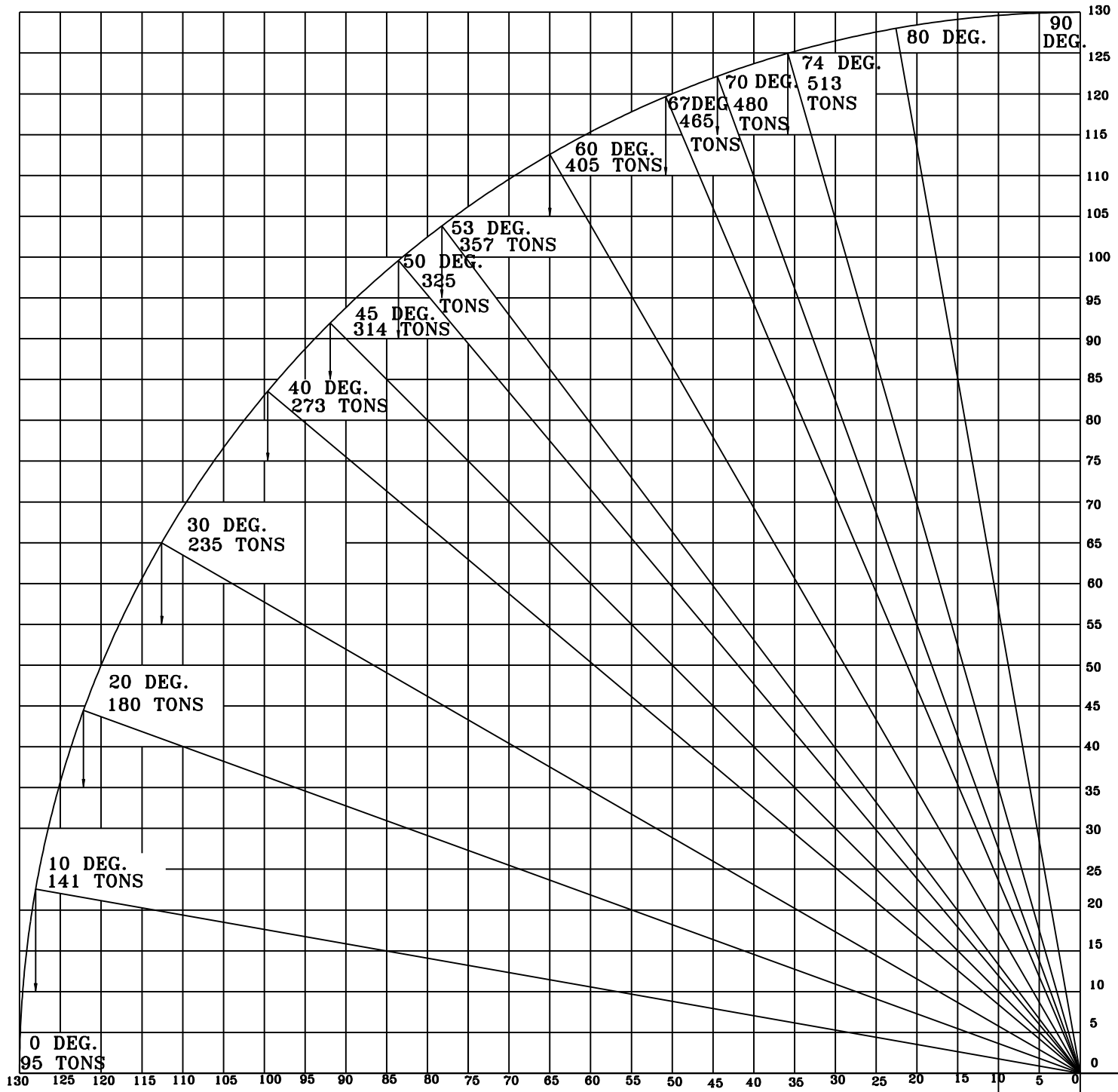
VALUES SHOWN ARE HOOK LOADS.

THE LOADS SHOWN ARE LESS THAN THE ALLOWABLE TO ACCOUNT FOR THE WEIGHT OF THE BLOCKS AND HOOKS EBI LOAD LINE BLOCK AND HOOK WEIGHT IS 1300 LBS., EBI WHIP LINE BLOCK AND HOOK WEIGHT IS 100 LBS.

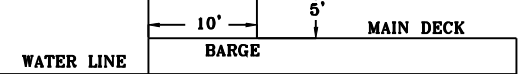
LOAD LINE (5 PART LINE): 1" 6X25 EIPS IWRC; 100,000 LB. NOMINAL STRENGTH; 20,000 LB. WORKING STRENGTH.

WHIP LINE (1 PART LINE): 9/16" 19X7 EIPS IWRC; 25,000 LB. NOMINAL STRENGTH; 5,000 LB. WORKING STRENGTH.

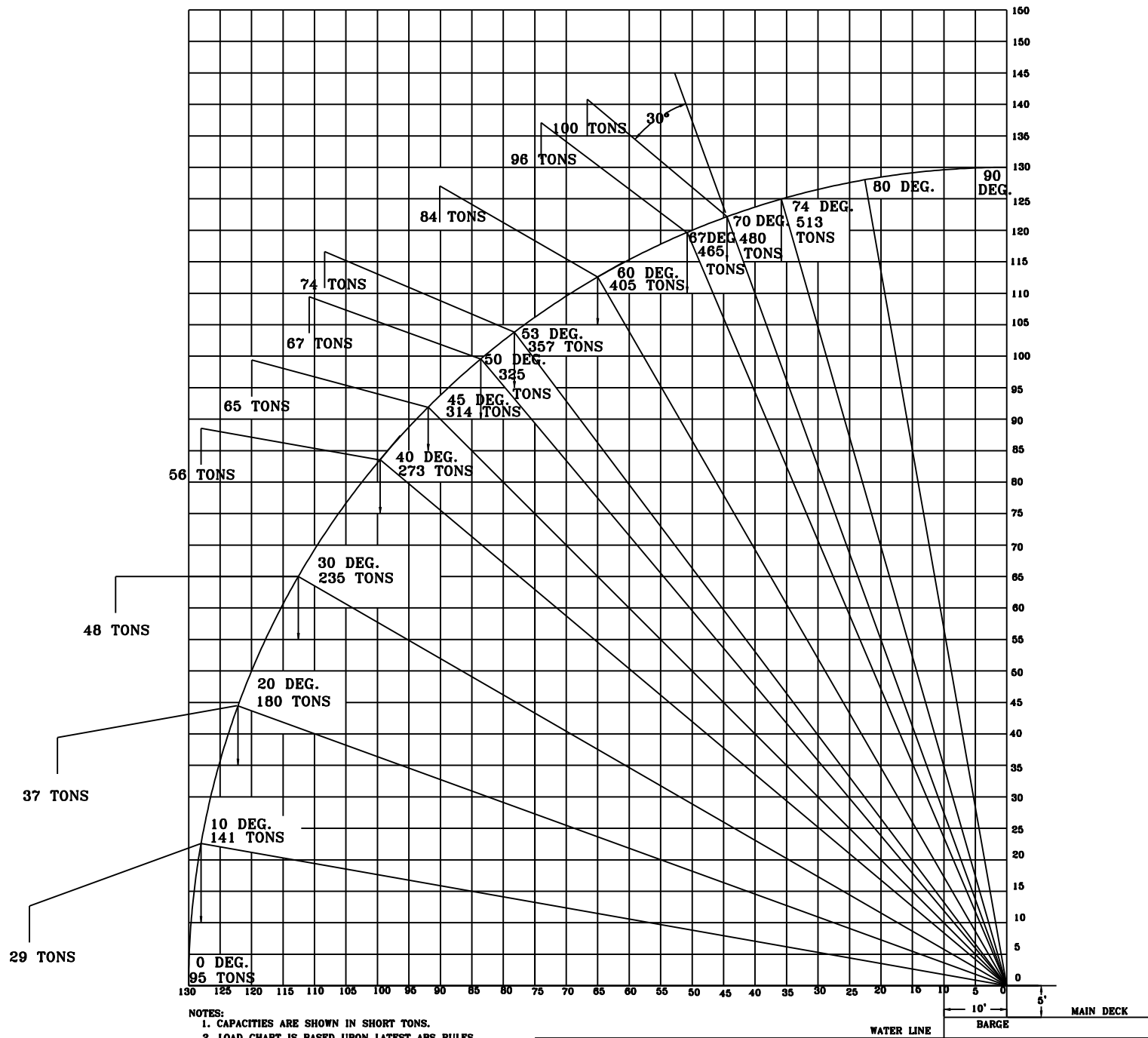
STATIC LOAD = 1.5' DYNAMIC LOAD. STATIC RATING MAY BE LIMITED (EXAMPLE: WIRE ROPE CAPACITY).
 PERSONNEL HANDLING LOAD*LESSER OF: DYN LOAD DIVIDED BY 2 OR NOMINAL STRENGTH DIVIDED BY 10.
 CRANE IS MOUNTED ON BOTTOM SUPPORTED STRUCTURE.



NOTES:
 1. CAPACITIES ARE SHOWN IN SHORT TONS.
 2. LOAD CHART IS BASED UPON LATEST ABS RULES.



ILLUMINATOR
 LOAD CHART
 130'-0" BOOM



- NOTES:
 1. CAPACITIES ARE SHOWN IN SHORT TONS.
 2. LOAD CHART IS BASED UPON LATEST ABS RULES.

**ILLUMINATOR
 LOAD CHART
 130'-0" BOOM**